



JAMES  
ANDERSON



## TO LET

Ashleigh Road, London, SW14

**£3,350 Per Month**

Per Month

A beautifully presented mid terraced 3 bedroom home offering flexible and spacious living, with two reception rooms and two bathrooms. The property includes a private garden and is perfectly positioned within walking distance of both Barnes Bridge and Mortlake train stations.



Three Bedrooms



Two Bathrooms



Two Reception Rooms



Modern Kitchen



EPC Rating D/Council Tax Band D/Deposit £3,865.38



Close To Mortlake Station



Thomson House School



Close To The River Thames



Juliette Balcony



Minimum Term 12 Months | Holding Deposit £773.07

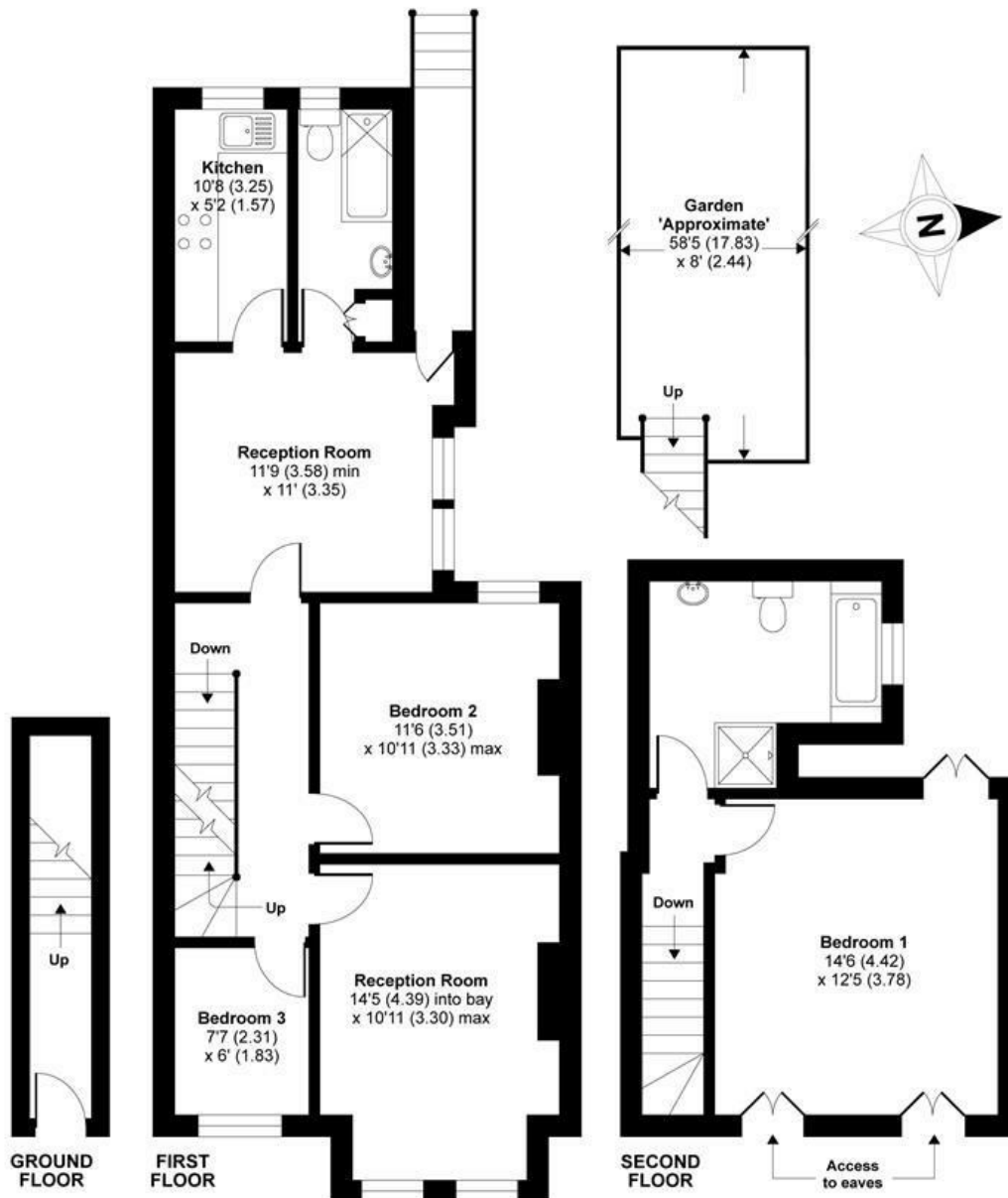


OPEN 7 DAYS A WEEK • Weekdays until 9pm • Weekends until 5pm

0208 876 6611

# Ashleigh Road, London, SW14

APPROX. GROSS INTERNAL FLOOR AREA 1058 SQ FT 98.2 SQ METRES



Whilst every attempt has been made to ensure the accuracy of the floor plan contained here, measurements of doors, windows and rooms are approximate and no responsibility is taken for any error, omission or misstatement. These plans are for representation purposes only as defined by RICS Code of Measuring Practice and should be used as such by any prospective purchaser. Specifically no guarantee is given on the total square footage of the property if quoted on this plan. Any figure given is for initial guidance only and should not be relied on as a basis of valuation.

Copyright nichecom.co.uk 2016 Produced for James Anderson REF : 130676

Energy Efficiency Rating		
	Current	Potential
Very energy efficient - lower running costs		
(92 plus) <b>A</b>		
(81-91) <b>B</b>		
(69-80) <b>C</b>		
(55-68) <b>D</b>		
(39-54) <b>E</b>		
(21-38) <b>F</b>		
(1-20) <b>G</b>		
Not energy efficient - higher running costs		
	68	73
<b>England &amp; Wales</b>	EU Directive 2002/91/EC	

Environmental Impact (CO <sub>2</sub> ) Rating		
	Current	Potential
Very environmentally friendly - lower CO <sub>2</sub> emissions		
(92 plus) <b>A</b>		
(81-91) <b>B</b>		
(69-80) <b>C</b>		
(55-68) <b>D</b>		
(39-54) <b>E</b>		
(21-38) <b>F</b>		
(1-20) <b>G</b>		
Not environmentally friendly - higher CO <sub>2</sub> emissions		
<b>England &amp; Wales</b>	EU Directive 2002/91/EC	

